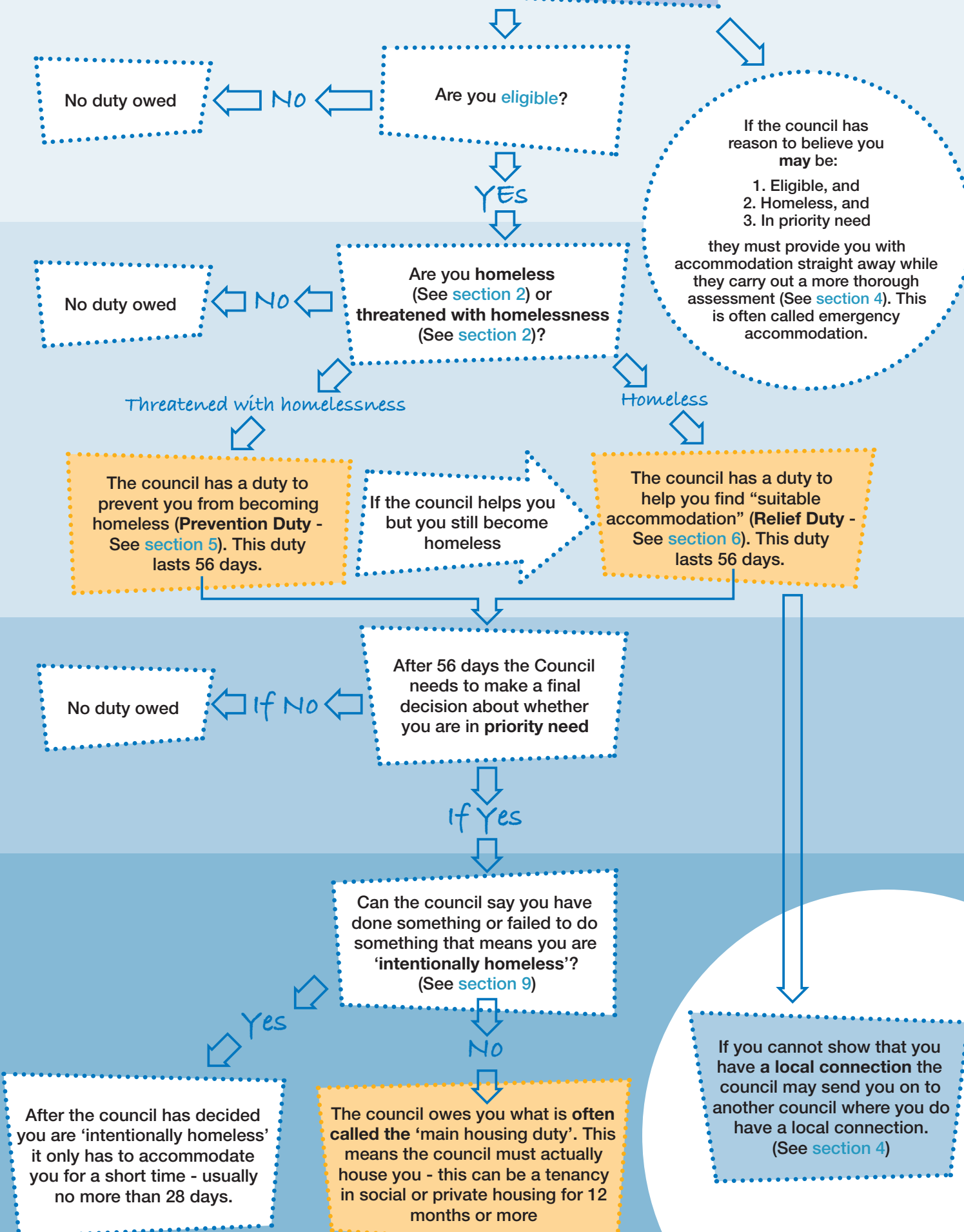


Homelessness Application Process



If the council has reason to believe you may be:

1. Eligible, and
2. Homeless, and
3. In priority need

they must provide you with accommodation straight away while they carry out a more thorough assessment (See section 4). This is often called emergency accommodation.

The council has a duty to prevent you from becoming homeless (Prevention Duty - See section 5). This duty lasts 56 days.

The council has a duty to help you find "suitable accommodation" (Relief Duty - See section 6). This duty lasts 56 days.

After the council has decided you are 'intentionally homeless' it only has to accommodate you for a short time - usually no more than 28 days.

The council owes you what is often called the 'main housing duty'. This means the council must actually house you - this can be a tenancy in social or private housing for 12 months or more

If you cannot show that you have a local connection the council may send you on to another council where you do have a local connection. (See section 4)